



## Drain valves

AV540 and AV550

### Application and function

The drain valves are used on pressure vessels and steam boilers to drain or vent the attached pressurised equipment. The range of applications covers the entire product range of level indicators and other pressurised components with a drain connection.

The valves can either be closed or opened by turning the handwheel.

### Technical basic equipment

- Inlet side: male thread G 1/2 "
- Outlet side: Weld-on end or flange
- Valve body for AV540 and AV550 made of pressure vessel steel according to DIN or ASME
- Valve inner parts made of stainless steel
- Steel handwheel Ø80mm (up to PS = 32 bar)
- Aluminium handwheel Ø110mm (up to PS = 200 bar)

### Optional versions

- Customised inlet and outlet connections
- Valve body for AV545 and AV555 made of stainless steel according to DIN or ASME
- Valve body tested according to EN 10204 - 3.1



AV540  
Inlet G 1/2" Outlet AE 26,9 x 5



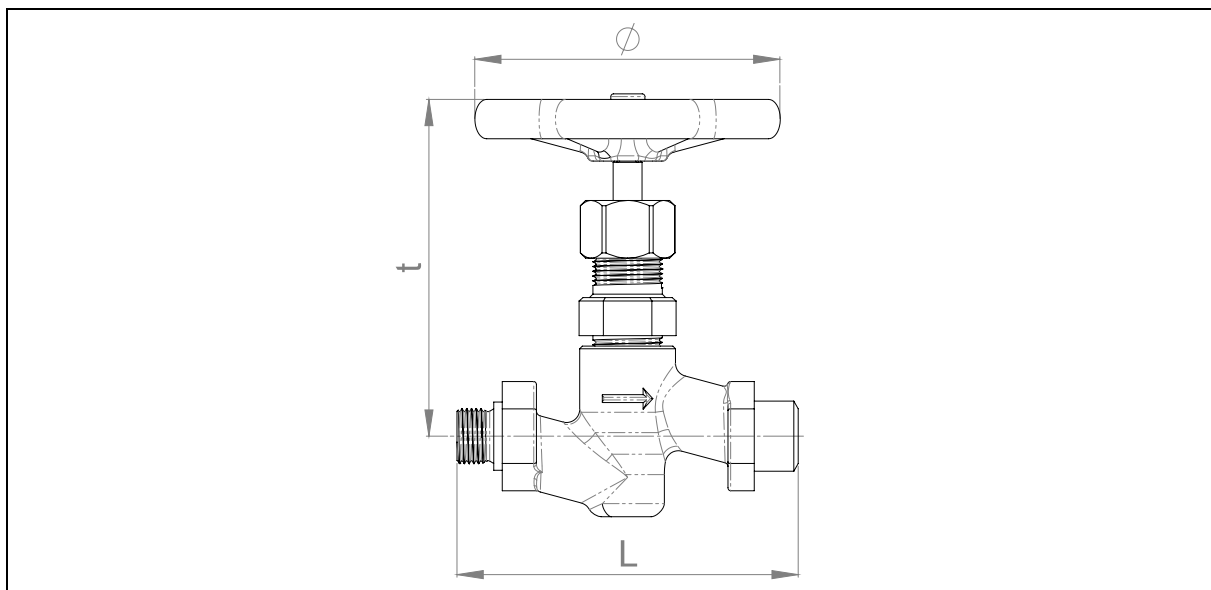
AV550  
Inlet G 1/2" Outlet AE 26,9 x 5

## Technical data

Operating limits AV540 / AV545	perm. pressure [PS]	perm. temperature [TS]
	32 bar 464 psig	239 °C 462 °F

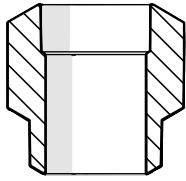
Operating limits AV550 / AV555	perm. pressure [PS]	perm. temperature [TS]
	200 bar 2900 psig	367 °C 690 °F

## Dimensions and sizes

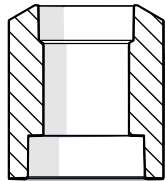


		up to 32 bar / 464 psig (AV540 / AV545)		up to 200 bar / 2900 psig (AV550 / AV555)	
		[mm]	[inch]	[mm]	[inch]
Length	[L]	~130	~ 5 1/8	~130	~ 5 1/8
Depth	[t]	130	5 1/8	130	5 1/8
Handwheel diameter	[Ø]	80	3 1/7	110	4 1/3

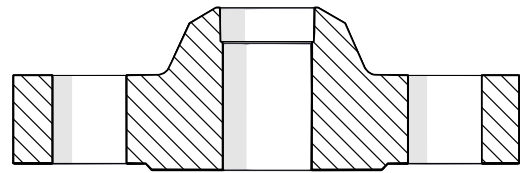
## Available connections



*Welding end*



*Socket welding*



*Flange*

## Optional versions

### Stainless steel housing



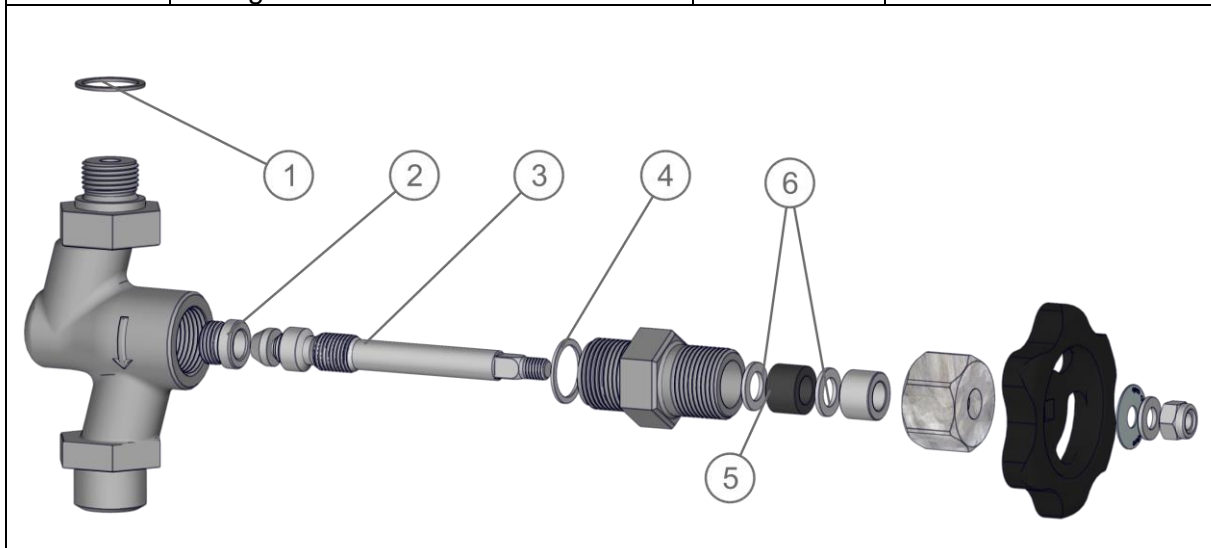
*Ex.: AV545*



*Ex.: AV555*

## Spare parts

Pos.	Description	Quantity	Article-No.
1	Sealing ring $\varnothing$ 21 x 26 x 1,5 mm	1	40-00099
2	Seat	1	40-01953
3	Spindle with cone	1	40-04135
4	Sealing ring $\varnothing$ 24 x $\varnothing$ 20 x 1,5mm	1	40-01873
5	Packing set	1	40-01867
6	Scraper rings	2	40-02360
2,3,4	Spare parts package for spindle replacement	1	15-18977
5,6	Spare parts package for Packing change	1	15-18968



## Digital documentation



*Direct download*



*Product page on the Internet*

### Igema GmbH

Antwerpener Str. 1  
48163 Muenster  
Germany

[www.igema.com](http://www.igema.com)

Telephone: +49 25 01 924 24 0  
Telefax: +49 25 01 924 24 99  
[info@igema.com](mailto:info@igema.com)

