

## Drain valve

AV250 and AV320

### Application and function

The valves are used for draining or venting. The range of application covers the entire product range of liquid level indicators and float devices, as well as all other pressure-bearing vessels and containers.

### Technical basic equipment

- Flow DN 8
- Inlet side: External thread BSP G 1/2"
- Outlet side: Cutting ring screw connection DS12 according to EN 8434-1
- Valve body: P355NH / SA516/70
- Valve spindle: Stainless steel
- Handwheel: Steel

### Optional versions

- Inlet and outlet optionally with:
  - Welding ends according to EN / ASME or customer request
  - Socket welding according to EN / ASME or customer request
  - Flanges EN / ASME or customer request
  - Thread according to EN / ASME or customer request



AV250

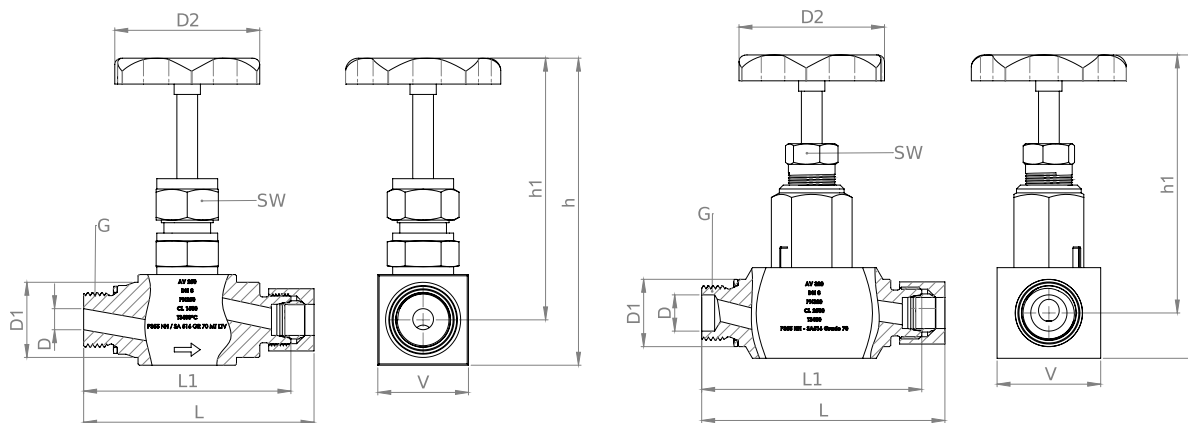


AV320

## Technical data

		AV250	AV320
Permissible Pressure	<b>PS</b>	PN250 according to EN 12516-1	PN320 according to EN 12516-1
Permissible Temperature	<b>TS</b>	Class 1500 according to ASME B16.34	Class 2500 according to ASME B16.34
Article number		15-16613	15-14753

## Dimensions and sizes





Ex.: AV250 with cutting ring screw connection DS12

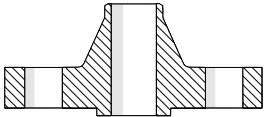
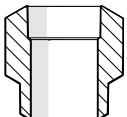
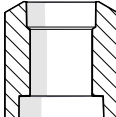
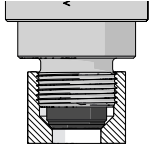
Ex.: AV320 with cutting ring screw connection DS12

		AV250		AV320	
		[mm]	[inch]	[mm]	[inch]
Connection thread	G	G 1/2" BSP		G 1/2" BSP	
Diameter	D	8	1/3	14	5/9
Connection diameter	D1	26	1	26	1
Handle diameter	D2	60	2 1/3	60	2 1/3
Height	h	117	4 3/5	117	4 3/5
Connection height	h1	100	4	100	4
Spanner width	SW	24	1	18	5/7
Square dimension	V	□35	□1 3/8	□40 x 35	□1 4/7 x 1 3/8
Connection length	L1	80	3 1/7	85	3 1/3
Total length	L	89	3 1/2	94	3 5/7

## Optional versions

Examples of the optional versions	
Double drain valve	customised outlet flange
	
Ex.: AV251 with cutting ring screw connection DS12	Ex.: AV250 Input: BSP G 1/2" Output: Flansch CI 1500 NPS 3/4"

Type	Data sheet	Article number
Double drain valve AV251 with cutting ring screw connection DS12	D-09-D-61489-EN	15-14733

Available connections					
					
	Flange	Welding end	Socket welding	Cutting ring screw connection	
Type	Input	Output	Total length [L]		Article number
			[mm]	[inch]	
AV250	BSP G 1/2"	Cutting ring screw connection DS12	89	3 1/2	15-16613
		Welding end Ø26,9 x 5,95	90	3 1/2	15-14708
		Flange NPS 3/4" CI.1500	137	5 2/5	15-14776
		Socket welding 1/2" CI.3000	127	5	15-14898
	BSP G 1/2"	90	3 1/2	15-15126	
	Welding end Ø26,9 x 5,95	Cutting ring screw connection DS12	94	3 5/7	15-14732
	Welding end Ø21 x 3	Welding end Ø21 x 3	90	3 1/2	15-14887
AV320	BSP G 1/2"	Cutting ring screw connection DS12	94	3 5/7	15-14753
	Welding end Ø26,9 x 5,95	Welding end Ø26,9 x 5,95	90	3 1/2	15-16550
	Welding end Ø33.4 x 6,35	Welding end Ø26,9 x 5,95	90	3 1/2	15-16551

## Spare parts

If the drain valve is damaged, the complete valve must be replaced. If the drain valve is disassembled for maintenance or other reasons, check the thread for damage before assembly, apply suitable lubricant (e.g. *Fuchs Lubritech PBC 1574 High-Temperature Anti-Seize Paste*) and replace the sealing ring.

Pos.	Description	Material	Size	Article-No.	Quantity
1	Sealing ring	Soft steel	Ø21 x 26 x 1,5mm	40-00099	1
		Stainless steel		40-00128	



## Digital documentation



*Direct download*



*Product page on the Internet*

### Igema GmbH

Antwerpener Str. 1  
48163 Muenster  
Germany

[www.igema.com](http://www.igema.com)

Telephone: +49 25 01 924 24 0  
Telefax: +49 25 01 924 24 99  
[info@igema.com](mailto:info@igema.com)

