

Type DKM

Small desuperheater to control the temperature of superheated steam or gas



> Type DKM, front view



> Type DKM, sectional view

Product features

- Excellent for small mass flows
- The injection cooler has a reduced spray head especially for small pipelines and additionally uses a multi-level control system
- Spray head with integrated high-performance nozzles. Selectable control characteristics for precise temperature control
- Cascade trim design
- High control accuracy over the entire control range
- Tightly closing metallic seat. No leakage in closed position and thus no emptying of the cooling water lines possible.
- No additional control valves required
- High operational reliability through the use of simple components, minimal wear and tear

Applications

- For small boiler and process applications and for the food and beverage industry
- Suitable for small piping applications

Type DKM

Small desuperheater to control the temperature of superheated steam or gas

Technical data

Nominal diameter	DN 50–400 / NPS 2–16
Pressure class	PN 16–400 / Class 150–2500
Temperature (max.)	Up to 650 °C / 1200 °F
Housing material	1.0460 / A105 1.5415 1.7335 / A182F12Cl.2 1.7383 / A182F22Cl.3 1.4903 / A182F91
Housing type	Forged
Media	Superheated steam, gas
Flanges	EN 1092-1, ASME B16.5, ISO 7005, JIS, JPI
Actuators	Electric, pneumatic, hydraulic, handwheel (for manual operation)
Number of stages (max.)	6
Number of controlled stages (max.)	6
Operating range (max.)	1:15 (water)

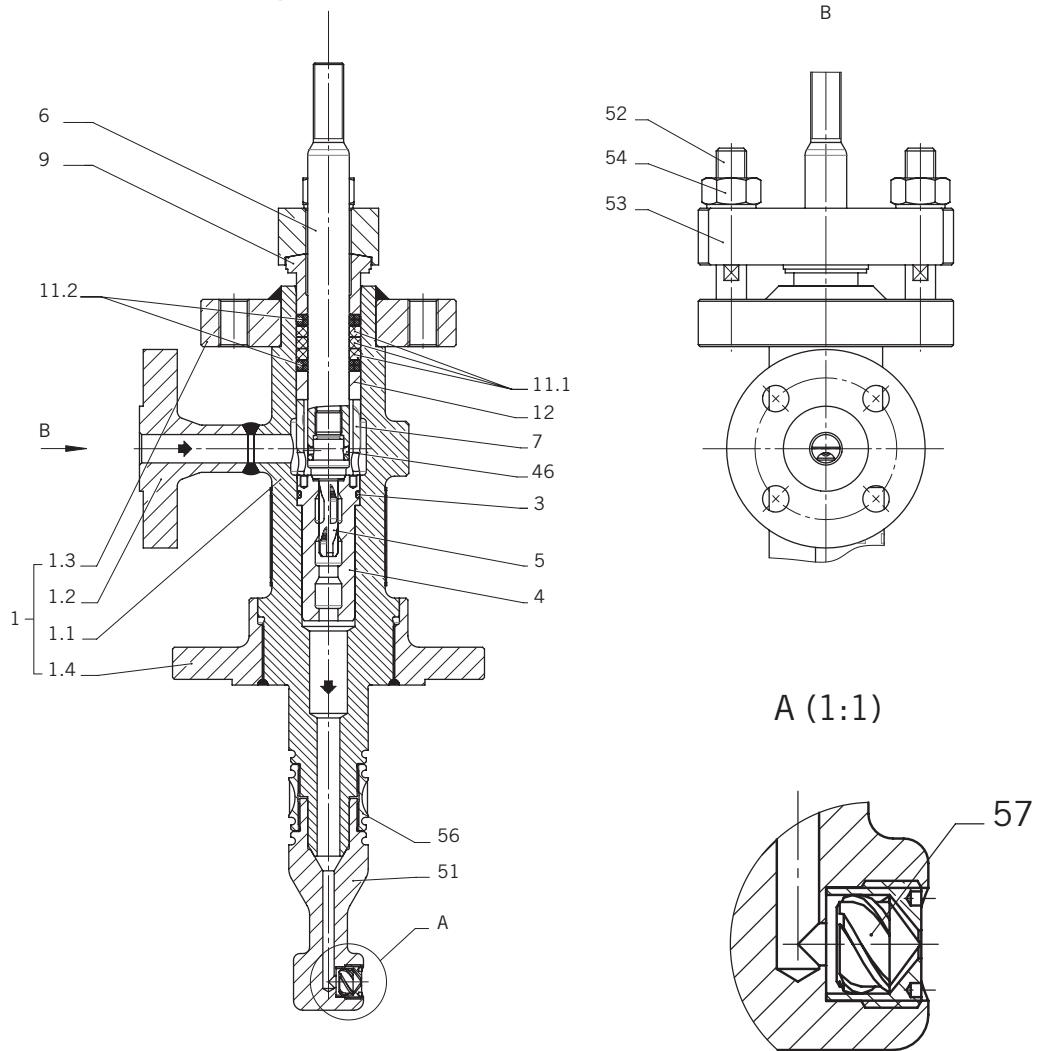
Function

see chapter DKV (Page 69)

Type DKM

Small desuperheater to control the temperature of superheated steam or gas

Sectional drawing



Type DKM

Small desuperheater to control the temperature of superheated steam or gas

Parts list

Pos.	Item	Material
1	Housing cpl.	*
1.1	Housing	*
1.2	Flange	*
1.3	Flange	*
1.4	Flange	*
3	O-Ring	**
4	Cascade bushing	1.4122
5	Valve plug	1.4122
6	Valve spindle	1.4057
7	Spacer ring	1.4122
9	Packing follower	1.4122
11.1	Packing	Grafit
11.2	Packing	Grafit
12	Bottom ring	1.4122
20	Spacer bolt	1.1181
35	Hexagon nut	8
46	Pin	1.4301
51	Spray head	1.4006
52	Stud bolt	1.7709
53	Gland plate	*
54	Hexagon nut	1.7218
56	Clamping nut	1.4006
57	Spray nozzle	1.4301/1.4313
121	Piston ring	1.0460

* See table "Technical data"

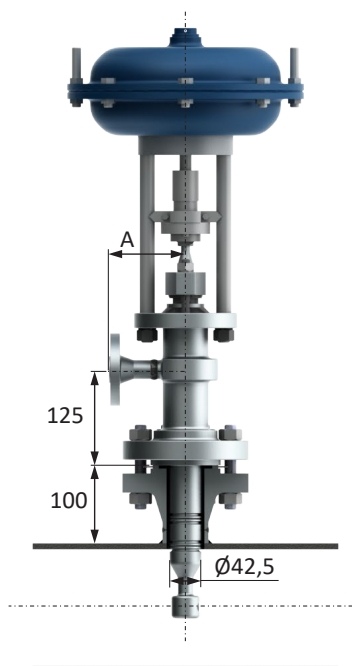
** Depending on customer requirements

Parts list as an example of the standard configuration

Type DKM

Small desuperheater to control the temperature of superheated steam or gas

Dimensions



DN / NPS	PN / CLASS				
	63 / 300	100 / 600	160 / 900	250 / 1500	400 / 2500
≤25 / 1	A = 135		A = 160		
>25 / 1			A = 185		